



Hutchinson's Bank, 14 acres of chalk grassland just south of Croydon in Greater London.

## Photographs from Surrey

VC17 - SURREY  
Copyright 2025 Gerald 'Jed' Corbett



**Holly Blue** (*Celastrina argiolus*) Female upperside.

Hutchinson's Bank - May'25



**Holly Blue** (*Celastrina argiolus*) Female underside.

Hutchinson's Bank - May'25



**Brimstone** (*Tamas Nestor*) Male underside.

Hutchinson's Bank - May'25



**Courting Brimstones** (*Tamas Nestor*) Female upper.

Hutchinson's Bank - May'25



**Common Blue** (*Polyommatus icarus*) Male.

Hutchinson's Bank - May'25



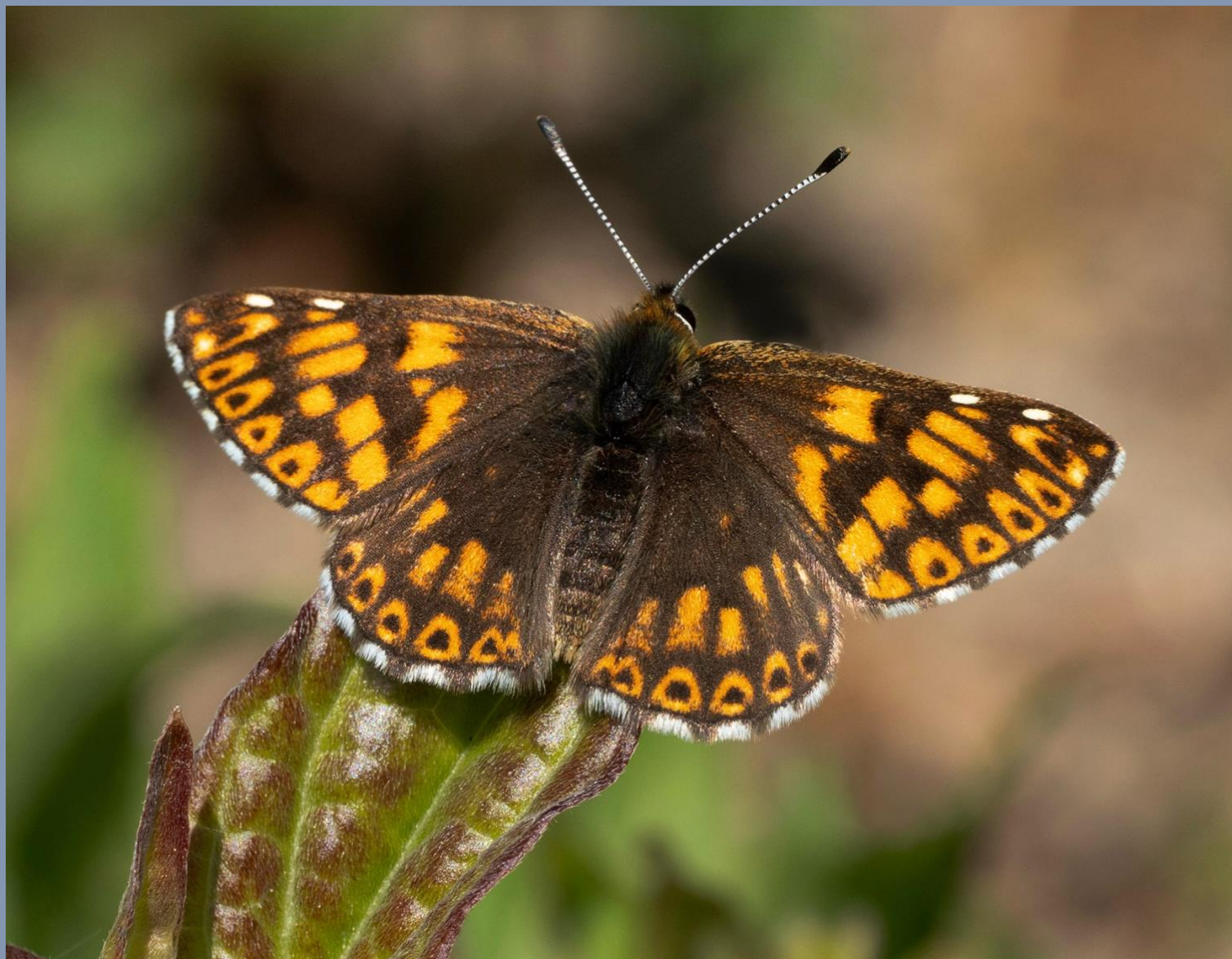
**Dingy Skipper** (*Erynnis tages*)

Hutchinson's Bank - May'25



**Glanville Fritillary** (*Melitaea cinxia*)

Hutchinson's Bank - May'25



**Duke of Burgundy** (*Hamearis Lucina*) Male

Chapel Bank - May '25



**Duke of Burgundy** (*Hamearis Lucina*) Male

Chapel Bank - May '25



**Small Blue** (*Cupidi minimus*)

Slimming's Down - May '25



Fairmile Common

May '25



**Silver-studded Blue** (*Plebejus argus*)

Fairmile Common - May '25



**Silver-studded Blue** (*Plebejus argus*) Male

Fairmile Common - May '25



**Silver-studded Blue** (*Plebejus argus*) Female

Fairmile Common - May '25



**Silver-studded Blue** (*Plebejus argus*) Female underwing.

Fairmile Common - May '25



**Silver-studded Blue** (*Plebejus argus*) Male underwing.

Fairmile Common - May '25



**Silver-studded Blue** (*Plebejus argus*) Male

Fairmile Common - May '25



**Silver-studded Blue** (*Plebejus argus*) Male underwing.

Fairmile Common - May '25



**Silver-studded Blue** (*Plebejus argus*) Male underwing.

Fairmile Common - May '25



**Fox Moth** (*Macrothylacia rubi*) Female

Fairmile Common - May '25



**Honey Bee** (*Apis mellifera*)

Fairmile Common - May '25